

SURGE CURRENTS

S.N.C.A.

Moonrise January 28

Volume 168

January 2021

Happy New Year

School Christmas Art



New Owners

As a lot of you already know, we have sold our property. We are sad to leave this piece of paradise we have called home for so long, but we know it's time. There are a lot of people we will miss! We will be back for visits with our friends and rellies.

At this time, we would like to introduce you to the new owners! They are Keith and Sara, along with their two fur-babies, Chunk and Koda. They bring with them an abundance of energy and excitement at the prospect of living off-the-grid. We feel they will not only revive our property and love it as we did, but they will fit well into the community!

Keith is a ticketed carpenter. Sara has 10 years as a care aide and is currently working as a residential cleaner in a resort.

We know you will all welcome them when they arrive in the New Year!

Pat and Derek



Welcome Sofia, Julian, Rose-Marie and Sasha!!



It is our great pleasure to Welcome this lovely little family to live here on Read Island and be a part of our growing Surge Narrows Community!!

Julian and Sofia and their soon to be 2-year-old twins, Rose-Marie and Sasha have travelled from the Eastern Townships of Quebec in hopes of finding a place to call home. They are very excited to have found Read Island to build their nest and contribute their skills and energy to our vision of becoming a more cooperative and food sustainable community. (Julian's older son Solay lives with his mother in Quebec.)

They are currently hunkering down for the winter at the Moss family homestead; warm and cozy and adapting to the lifestyle. They would like to express their gratitude to all who helped make their transition a smooth one and look forward to meeting everybody in due time.

We know this community will welcome them warmly and wish them all the best!!

Rock and Sheila

SNCA BOARD UPDATE

We hope you all had a cozy holiday and that you found ways to connect and celebrate with friends and family.

Here's a short update on what we have been up to in the last month:

- The Committee reviewing SNCA's constitutional "purpose" drafted a new statement which aims to better outline SNCA's current purpose. This draft will be sent out for community review and input in the coming months before going to a vote at the next AMG in the fall.
- We met with the Surge School Principal and the Superintendent who were both very supportive of moving community projects forward. The projects they were excited about were the outdoor education room/pavilion and the "greening" of the school. The latter project involves moving the school to propane heat and therefore requiring much less generator running time. We had already been talking about installing propane heat in the Gym to enable it's use in the colder months, and it appears that we could piggy back on the schools plans. Please let Sheila know if you are interested in getting involved or knowing more about these projects.
- We are still transitioning to Board life without Ginny, navigating through the tasks she made look so easy(!)
- Update re: Hoskyn Dock - Jacob Blanchard of SRD and Seaway Diving are going to fix the mooring chains at the Hoskyn dock which dragged in the recent SE storm. They also discovered 2 nearly rusted out chain links.

Looking ahead to 2021 we plan on continuing to support community projects and initiatives and fulfilling our grant obligations. Early in the new year we will be developing our Financial Plan and if there are funds to spare, we will be seeking input as to what projects our members would like to see move forward.

We hope that 2021 brings our community even closer together and that we may find ways to gather and celebrate again. Happy New Year!

SNCA Board,
Sheila (fashedo@hotmail.com), Rosie, Jim, Steve, Dood

Current Events and Notices

Medical Clinic January

Dr. Steve will be attending the clinic on January 13th.

Anyone need hearing aid batteries? I changed hearing aid's and have 8 packages of type +13 batteries. Please contact me at ksb.svb@gmail.com if you can use them. KB

"Happy Holidays to everyone in the Surge Community! To help make up for missing out on our annual Christmas Concert, the kids and I drew, coloured, printed and distributed Christmas cards to as many community members as we could think of.

I thought you might be curious as to who drew and coloured the cards you got, as well as what some of the other amazing designs looked like, so here is a peek at ALL the lovely cards the kids created this year, with their names by each one. If we missed sending a physical card to you, we're sorry and we hope you enjoy this digital version!

Enjoy, and all the best for 2021 to you all!

The Surge Kids and Zephyr

PS. Though she is not a Surge School student, my 5-year-old niece Nora (Sitka's daughter) was excited to help create designs for this project as well, so you'll notice some of her artwork has snuck into the mix."



Drawn by Arwen



Drawn by Nora



Drawn by Natalie



Drawn by Nora



Drawn by Nora



Drawn by Nora



Drawn by Juniper



Drawn by Juniper



Drawn by Jasmine



Drawn by Jasmine



Coloured by Dylan
(Drawn by Zephyr)



Coloured by Logan
(Drawn by Juniper)



Coloured by Samuel
(Drawn by Juniper)



Drawn by Juniper



Coloured by Dylan
(Drawn by Zephyr)



Coloured by Julia
(Drawn by Juniper)



Drawn by Juniper



Drawn by Juniper



Coloured by Dylan
(Drawn by Zephyr)



Drawn by Salix



Coloured by Salix
(Drawn by Zephyr)



Drawn by Salix

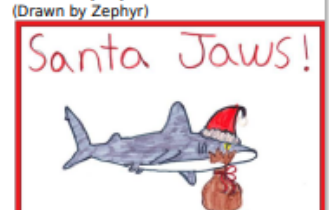
Surge Narrows School Cards for the Community Merry Christmas 2020!



Coloured by Dylan
(Drawn by Zephyr)



Coloured by Salix
(Drawn by Zephyr)



Drawn by Salix



Coloured by Salix
(Drawn by Zephyr)



Drawn by Juniper



Drawn by Jasmine



Drawn by Juniper

SNFAC Update

Firstly, we want to say a big THANK YOU to everybody who took the time to send a letter regarding the WLP for 0046. Len Apedaile received over 40 responses. One of the letters was also sent and acknowledged by the new Minister of Forestry.

After last month's big push to respond to WLP 0046 everybody felt like a bit of a break, however, on Sunday, Dec.20th a small group of volunteers met up to walk 4 proposed cut blocks on Maple Hill. The group split up and each team walked a different block observing tree species, sizes etc. These four cut blocks are in WL 0046 and David Graham plans to start cutting there as soon as the WLP is approved.

On Tuesday, Dec.23rd, four of us met with Len Apedaile (D. Graham's forester) at the same cut blocks for an approximately three hour discussion. A large part of this area is within the PLN (protected landscape network) which Eve Flager has been mapping with the help of Herb Hammond.



This is a link that reports on a new study about which trees capture and store the most carbon
https://www.eurekalert.org/pub_releases/2020-11/f-tb110220.php

This is the website which takes you to the big tree registry. It explains which trees are candidates and shows photos of trees that have already been registered.
<https://bigtrees.forestry.ubc.ca/>

Watch this for a different take on B.C's forest industry
<https://www.facebook.com/watch/?v=318608566066128>



Maya

<https://www.timeanddate.com/sun/@5909050?month=12&year=2020>

Very cool website. Check out the “sun calculator” under the tab Sun & Moon.

timeanddate.com

Home World Clock Time Zones Calendar Weather Sun & Moon Timers Calculators Apps & API Free Fun

Home British Columbia, British Columbia, Canada — Sunrise, Sunset, and Daylength, December 2020 / British...

British Columbia, British Columbia, Canada — Sunrise, Sunset, and Daylength, December 2020

Search for city or place...

Time/General Weather Time Zone DST Changes Sun & Moon

Sun & Moon Today **Sunrise & Sunset** Moonrise & Moonset Moon Phases Eclipses Night Sky

Advertising

Rectangular Snip

Daylight
8:38 am – 4:07 pm
7 hours, 29 minutes

Current Time:	Dec 31, 2020 at 2:49:14 pm
Sun Direction:	213.42° SSW /
Sun Altitude:	6.96°
Sun Distance:	147.094 million km
Next Equinox:	Mar 20, 2021 2:37 am (Vernal)
Sunrise Today:	8:38 am ↘ 130° Southeast
Sunset Today:	4:07 pm ↙ 230° Southwest

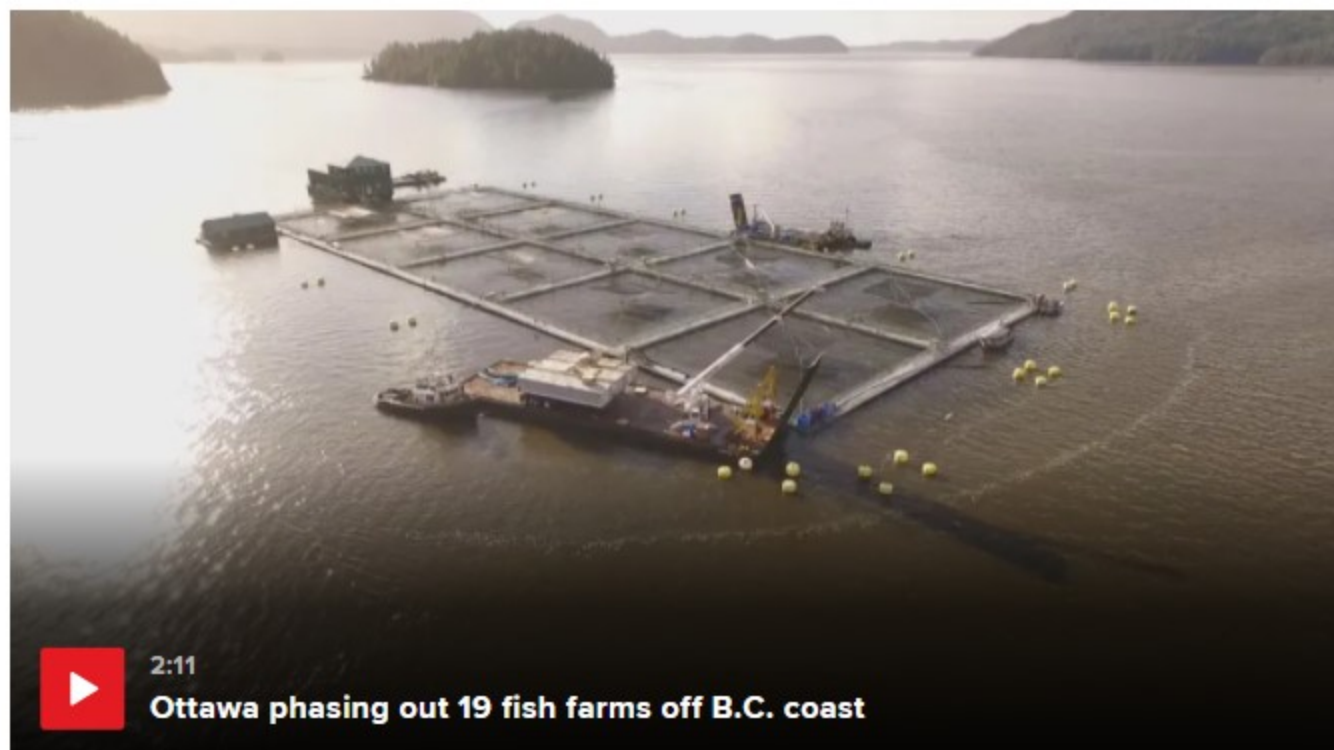


<https://www.hakai.org/what-a-massive-landslide-in-coastal-british-columbia-means-for-salmon-and-their-habitat/> (Locally, we became aware of the event when tremendous amounts of debris floated into our area. We did not know the source until several weeks later. KB)

Fish farms on key B.C. salmon migration route to be phased out by 2022 <https://globalnews.ca/news/7530159/fish-farms-on-key-b-c-salmon-migration-route-to-be-phased-out-by-2022/>

By Amy Smart · The Canadian Press

Posted December 17, 2020 8:12 pm · Updated December 18, 2020 9:46 pm



Nature's Solution to Climate Change

A strategy to protect whales can limit greenhouse gases and global warming

[Ralph Chami, Thomas Cosimano, Connel Fullenkamp, and Sena Oztosun](#)

When it comes to saving the planet, one whale is worth thousands of trees.

[PODCAST: THE VALUE OF WHALES AND EVERY OTHER BREATH](#)

[PDF VERSION](#)



Scientific research now indicates more clearly than ever that our carbon footprint—the release of carbon dioxide (CO₂) into the atmosphere where it contributes to global warming through the so-called greenhouse effect—now threatens our ecosystems and our way of life. But efforts to mitigate climate change face two significant challenges. The first is to find effective ways to reduce the amount of CO₂ in the atmosphere or its impact on average global temperature. The second is to raise sufficient funds to put these technologies into practice.

Many proposed solutions to global warming, such as capturing carbon directly from the air and burying it deep in the earth, are complex, untested, and expensive. What if there were a low-tech solution to this problem that not only is effective and economical, but also has a successful funding model?

An example of such an opportunity comes from a surprisingly simple and essentially “no-tech” strategy to capture more carbon from the atmosphere: increase global whale populations. Marine biologists have recently discovered that whales—especially the great whales—play a significant role in capturing carbon from the atmosphere (Roman and others 2014). And international organizations have implemented programs such as Reducing Emissions from Degradation and Deforestation (REDD) that fund the preservation of carbon-capturing ecosystems.

To read the whole article click on the PDF link above.

January 2021

Beazley

Turns	Maximum		reverse		maximum	
Day Time	Time	Knots	jour	heure	heure	noeuds
1	0603	0225 +10.0				
FR	1224	0913 -7.4				
VE	1746	1501 +5.4				
	2350	2045 -7.0				
2	0641	0303 +10.2				
SA	1306	0951 -7.4				
SA	1835	1545 +5.7				
		2130 -6.8				
3	0033	0345 +10.1				
SU	0722	1031 -7.6				
DI	1351	1635 +6.0				
	1929	2222 -6.4				
4	0121	0432 +9.6				
MO	0805	1116 -7.7				
LU	1440	1729 +6.4				
	2029	2322 -6.0				
5	0216	0524 +8.6				
TU	0852	1205 -7.7				
MA	1532	1828 +7.0				
	2137					
6	0318	0032 -5.7				
WE	0942	0624 +7.4				
ME	1625	1258 -7.6				
	2250	1930 +7.6				
7	0431	0146 -5.6				
TH	1035	0729 +6.1				
JE	1720	1354 -7.4				
		2033 +8.1				
8	0004	0300 -5.7				
FR	0551	0839 +5.2				
VE	1131	1453 -7.2				
	1815	2136 +8.7				
9	0111	0411 -6.1				
SA	0709	0942 +4.7				
SA	1229	1551 -7.1				
	1909	2236 +9.2				
10	0210	0517 -6.8				
SU	0818	1045 +4.6				
DI	1328	1648 -7.0				
	2001	2331 +9.6				
11	0303	0616 -7.5				
MO	0916	1147 +4.8				
LU	1426	1741 -7.1				
	2052					
12	0351	0022 +9.9				
TU	1006	0706 -8.0				
MA	1520	1238 +5.1				
	2140	1830 -7.3				
13	0435	0107 +10.0				
WE	1051	0752 -8.3				
ME	1611	1325 +5.5				
	2225	1916 -7.4				
14	0517	0150 +10.0				
TH	1135	0833 -8.3				
JE	1659	1411 +5.9				
	2308	2001 -7.4				
15	0558	0231 +10.0				
FR	1218	0913 -8.1				
VE	1747	1456 +6.1				
	2349	2045 -7.2				
16	0638	0311 +9.6				
SA	1302	0952 -7.8				
SA	1836	1543 +6.3				
		2132 -6.7				
17	0031	0352 +8.9				
SU	0717	1032 -7.4				
DI	1346	1625 +6.3				
	1928	2217 -6.0				
18	0115	0435 +7.9				
MO	0756	1114 -7.1				
LU	1432	1721 +6.3				
	2025	2322 -5.3				
19	0202	0529 +6.7				
TU	0836	1158 -6.7				
MA	1520	1815 +6.3				
	2134					
20	0259	0023 -4.7				
WE	0916	0615 +5.4				
ME	1610	1240 -6.2				
	2251	1910 +6.3				
21	0413	0124 -4.2				
TH	1001	0719 +4.2				
JE	1659	1338 -5.8				
		2018 +6.4				
22	0005	0240 -4.2				
FR	0549	0833 +3.5				
VE	1052	1441 -5.6				
	1749	2120 +6.7				
23	0107	0354 -4.5				
SA	0714	0933 +3.2				
SA	1149	1529 -5.6				
	1838	2208 +7.2				
24	0159	0456 -5.2				
SU	0816	1028 +3.5				
DI	1249	1622 -5.9				
	1925	2302 +7.8				
25	0244	0541 -5.9				
MO	0902	1117 +4.0				
LU	1346	1717 -6.3				
	2010	2348 +8.4				
26	0324	0630 -6.6				
TU	0940	1202 +4.5				
MA	1437	1757 -6.7				
	2053					
27	0359	0027 +8.9				
WE	1013	0709 -7.0				
ME	1524	1242 +5.1				
	2134	1829 -7.1				
28	0433	0101 +9.3				
TH	1047	0744 -7.4				
JE	1609	1324 +5.7				
	2215	1914 -7.4				
29	0507	0135 +9.9				
FR	1121	0817 -7.5				
VE	1653	1402 +6.3				
	2255	1954 -7.7				
30	0541	0210 +10.4				
SA	1158	0850 -7.6				
SA	1738	1442 +6.9				
	2337	2035 -7.9				
31	0617	0247 +10.7				
SU	1237	0924 -8.0				
DI	1824	1524 +7.5				
		2120 -7.8				

Hole in the Wall

Turns	Maximum		reverse		maximum	
Day Time	Time	Knots	jour	heure	heure	noeuds
1	0608	0231 +10.3				
FR	1235	0918 -7.2				
VE	1754	1509 +5.5				
		2051 -7.2				
2	0000	0309 +10.6				
SA	0647	0954 -7.5				
SA	1318	1553 +5.8				
	1842	2136 -7.0				
3	0044	0352 +10.5				
SU	0728	1035 -7.8				
DI	1404	1643 +6.2				
	1936	2228 -6.7				
4	0133	0440 +9.9				
MO	0812	1120 -8.0				
LU	1453	1737 +6.6				
	2036	2329 -6.2				
5	0228	0534 +8.8				
TU	0858	1210 -8.0				
MA	1545	1836 +7.2				
	2143					
6	0332	0037 -5.8				
WE	0948	0633 +7.5				
ME	1639	1303 -7.9				
	2256	1937 +7.8				
7	0445	0147 -5.7				
TH	1040	0739 +6.3				
JE	1733	1400 -7.7				
		2040 +8.3				
8	0008	0303 -5.9				
FR	0605	0849 +5.3				
VE	1136	1458 -7.5				
	1828	2142 +8.8				
9	0115	0427 -6.2				
SA	0723	0948 +4.8				
SA	1234	1556 -7.4				
	1921	2242 +9.2				
10	0215	0525 -6.7				
SU	0831	1058 +4.7				
DI	1332	1652 -7.3				
	2013	2336 +9.6				
11	0308	0623 -7.3				
MO	0929	1154 +4.9				
LU	1430	1745 -7.4				
	2102					
12	0356	0026 +9.9				
TU	1018	0714 -7.7				
MA	1525	1244 +5.3				
	2149	1834 -7.6				
13	0441	0111 +10.2				
WE	1104	0758 -7.9				
ME	1616	1331 +5.7				
	2234	1920 -7.7				
14	0523	0154 +10.4				
TH	1147	0839 -7.9				
JE	1705	1417 +6.1				
	2316	2004 -7.7				
15	0604	0235 +10.3				
FR	1230	0919 -7.7				
VE	1753	1503 +6.3				
	2358	2049 -7.4				
16	0645	0316 +10.0				
SA	1314	0958 -7.5				
SA	1842	1550 +6.4				
		2137 -6.9				
17	0040	0358 +9.2				
SU	0724	1039 -7.3				
DI	1359	1639 +6.4				
	1934	2228 -6.1				
18	0125	0442 +8.0				
MO	0803	1121 -7.1				
LU	1446	1731 +6.3				
	2032	2328 -5.4				
19	0213	0534 +6.7				
TU	0842	1206 -6.7				
MA	1534	1826 +6.2				
	2140					
20	0311	0032 -4.8				
WE	0922	0625 +5.3				
ME	1624	1255 -6.3				
	2256	1925 +6.2				
21	0428	0135 -4.4				

January 2021
Point Atkinson

Day	Time	Metres	Feet	jour	heure	mètres	pieds	
1	0027	0.5	1.6	16	0108	0.7	2.3	
	0808	4.8	15.7		0832	4.8	15.7	
FR	1332	3.6	11.8	SA	1430	3.1	10.2	
VE	1738	4.1	13.5	SA	1854	3.8	12.5	
2	0105	0.6	2.0	17	0146	1.1	3.6	
	0841	4.8	15.7		0905	4.8	15.7	
SA	1423	3.4	11.2	SU	1525	2.9	9.5	
SA	1829	3.9	12.8	DI	1951	3.6	11.8	
3	0145	0.8	2.6	18	0222	1.5	4.9	
	0915	4.8	15.7		0936	4.7	15.4	
SU	1521	3.2	10.5	MO	1620	2.6	8.5	
DI	1930	3.7	12.1	LU	2101	3.3	10.8	
4	0227	1.1	3.6	19	0257	2.0	6.6	
	0950	4.8	15.7		1005	4.6	15.1	
MO	1622	2.9	9.5	TU	1712	2.4	7.9	
LU	2045	3.5	11.5	MA	2232	3.2	10.5	
5	0312	1.6	5.2	20	0336	2.5	8.2	
	1026	4.8	15.7		1033	4.4	14.4	
TU	1721	2.5	8.2	WE	1801	2.1	6.9	
MA	2217	3.3	10.8	ME				
6	0403	2.1	6.9	21	0025	3.3	10.8	
	1102	4.8	15.7		0423	3.0	9.8	
WE	1816	2.0	6.6	TH	1101	4.3	14.1	
ME				JE	1848	1.8	5.9	
7	0007	3.4	11.2	22	0208	3.5	11.5	
	0503	2.6	8.5		0536	3.4	11.2	
TH	1139	4.7	15.4	FR	1131	4.2	13.8	
JE	1907	1.5	4.9	VE	1932	1.6	5.2	
8	0156	3.6	11.8	23	0324	3.8	12.5	
	0618	3.1	10.2		0718	3.6	11.8	
FR	1219	4.6	15.1	SA	1206	4.1	13.5	
VE	1956	1.1	3.6	SA	2015	1.4	4.6	
9	0321	4.0	13.1	24	0415	4.1	13.5	
	0740	3.4	11.2		0845	3.7	12.1	
SA	1301	4.6	15.1	SU	1247	4.1	13.5	
SA	2044	0.7	2.3	DI	2056	1.1	3.6	
10	0425	4.4	14.4	25	0455	4.3	14.1	
	0858	3.6	11.8		0946	3.7	12.1	
SU	1348	4.5	14.8	MO	1334	4.1	13.5	
DI	2132	0.4	1.3	LU	2137	0.9	3.0	
11	0517	4.6	15.1	26	0531	4.5	14.8	
	1004	3.7	12.1		1031	3.7	12.1	
MO	1439	4.5	14.8	TU	1425	4.1	13.5	
LU	2219	0.3	1.0	MA	2216	0.8	2.6	
12	0602	4.8	15.7	27	0603	4.6	15.1	
	1101	3.7	12.1		1108	3.6	11.8	
TU	1531	4.4	14.4	WE	1516	4.1	13.5	
MA	2304	0.2	0.7	ME	2255	0.6	2.0	
13	0643	4.9	16.1	28	0634	4.6	15.1	
	1153	3.6	11.8		1144	3.6	11.8	
WE	1623	4.3	14.1	TH	1606	4.2	13.8	
ME	2348	0.3	1.0	JE	2333	0.5	1.6	
14	0721	4.9	16.1	29	0702	4.7	15.4	
	1244	3.4	11.2		1222	3.4	11.2	
TH	1714	4.2	13.8	FR	1657	4.2	13.8	
JE				VE				
15	0029	0.5	1.6	30	0011	0.6	2.0	
	0757	4.9	16.1		0730	4.7	15.4	
FR	1336	3.3	10.8	SA	1304	3.2	10.5	
VE	1803	4.0	13.1	SA	1749	4.1	13.5	
				31	0049	0.7	2.3	
					0758	4.8	15.7	
					SU	1351	2.9	9.5
					DI	1845	4.0	13.1

Goats in Boats:

Maya and her goats are moving to Quadra for the winter.

Riding shotgun with Coady on the way to the Surge Dock.



Loaded up and ready to go!



Just another day in the life of a Read Island goat!








**THE NORTH ISLAND'S LARGEST
MARINE STORE AND BOATYARD**

**Discovery Harbour Shopping Centre and Marina, Campbell River, BC
Tel: 250-286-1011 / Toll Free: 1-800-663-2994 / www.oceanpacificmarine.com**

- 110-Ton Travelift**
- ABYC Certified Marine Technicians**
- ABYC Electricians**
- CWB Welders**
- Qualified Fiberglass**
- Cummins Marine Technicians**
- Painting and Detailing**
- Shipwrights & Fine Wood Workers**
- 2 – 40X80 Sheds, 1-60x80 Shed**
- Emergency Services Available**



PLB1, the World's smallest PLB

Waterproof to 15 m	No subscription	 FREE
Link via satellite to Emergency Services	406 MHz	
Fast accurate positioning	66 Channel GPS	
Homing Beacon to aid final location by Search and Rescue craft	121.5 MHz	
7 year battery life		30% smaller

Wherever you are, at sea, on land, the **rescueME PLB1** provides the reassurance that global emergency services can be alerted by the press of a button.

rescueME PLB1 works with the only officially recognised worldwide dedicated search and rescue satellite network (operated by Cospas Sarsat). As this is funded by governments there are **NO CHARGES** to use this service. When activated the **rescueME PLB1** transmits your position and your ID to a Rescue Coordination Center via satellite link. Rescue services nearest to your are promptly notified of your emergency and regularly advised of your current location to assist prompt rescue.

Regular Price
\$356.02
Sale Price
\$324.99
In Stock Only

Kevin Bates
Store Manager
Ocean Pacific Marine Store & Boatyard
P: 250.286.1011 | TF: 1.800.663.2294 EXT 315 | Fax: 250.286.6254
kevinb@oceanpacificmarine.com | www.oceanpacificmarine.com

***Surge Currents* is published as a communication tool for the local community but the content of the newsletter does not represent the opinions or position of the Surge Narrows Community Association, unless specifically stated or unless an article is signed by the Board of Directors. Back issues are available. Annual subscription to *Surge Currents* is free to residents/property owners and “Friends of Surge Narrows”. For non-residents, the annual rate is \$10.00 for email delivery. Subscription with delivery of printed copies via Canada Post is \$25.00, or \$30.00 to a U.S.A. address Editor: ksb.svb@gmail.com SNCA Directors: Sheila Hollanders (Chairman), Rosie Steeves (Secretary), Jim Mallis (Treasurer), Steve Barnes, Dood Turner**

Paid up SNCA members (104) for this year October 2020 to September 2021 are: Skip Allan, Heather Ballard, Kathy & Steve Barnes, Roger Beriault, Merlin Blixhavn, Emma Chandler, Trish & Graham Cocksedge, David Cox, Madeline Cureton, Sally Davies, Pat & Derek D’Altroy, Jonathan Ellis, Ken Flager, Eve Flager, Mark, Soma & Leslie Goresky, Pamela Harbord, Mary Caroline & John Hart, Renate & Scott, Jasmine, & Dillon Harvey, Violine, Ben, Tom & Shawnai Hollanders, Dr. Steve Hughes, Cameron Humphreys, Heather & Barry Jansen, Donna & Bruce Keeling, Linda & Bruce Kempling, Renate Kviet, Claudia Lake, Marc Lavergne, Dan, Jeff & Jill Lewis, Zach Locke, Nicole Magistro, Charmaine & Jim Mallis, Matt Malnarich, Wendy & Bill Matheson, Rachel & Roger Mattice, Ann & Richard Mayer, Kathy & Dwayne McLean, Joanne McSporrان, the Moss Family (13), Jeremy Paine, Johanna Paradis, Kiersten & Ashley Riley, Gloria, Dale, Amy, & Catherine Rolfsen, Suromitra Santani, Madeleine & Don Shalansky, Eileen Sowerby, Megan Steeves, Rosie & Bob Steeves, Roberta Stevenson, Josh Sutherland, Anne Tonkin, Karen & Peter Tonseth, Hazel Trego, Dood Turner, David Turpin, Caren Van Der Mark, Ginny Vassal, Shauny & Rand Volk, Sandy Welch, Maya Weichelt, Douglas White, Laurie & Rob Wood

Thank you to our 2020-2021 members.

SNCA membership is \$10.00 annually, and covers from AGM to AGM: Surge Narrows Community Association, P.O. Box 52, Surge Narrows V0P 1W0. Donations for general expenses, or as you designate for our projects, are also gratefully received at this address. Donations can also be made by email transfer to surgenarrows@gmail.com.